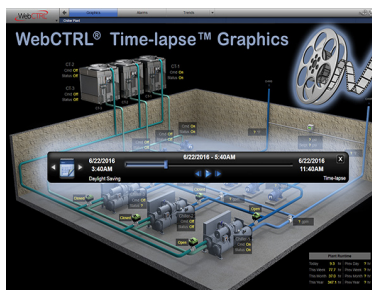


## The Automated Logic Advantage

### Standard Features that set WebCTRL® Apart

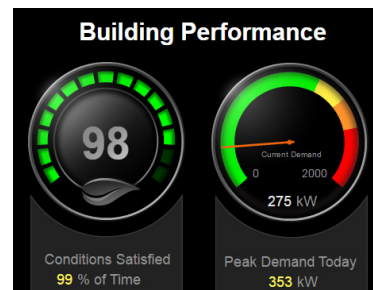


### Time-lapse™ Graphics

The revolutionary Time-lapse™ feature within the WebCTRL system allows operators to roll back time, up to a 24-hour slice, and play back hours of real-time data in just minutes. View floor plans, equipment graphics, trends, and alarms over a past period of time so you can quickly identify, review, and resolve building control issues.

### Environmental Index™

Since the key component of comfort is temperature, the Environmental Index™ tool assigns point values based on the difference between zone temperature and heating and cooling setpoints to compute a comprehensive "score". Other factors, such as humidity and CO<sub>2</sub> levels can also be considered.

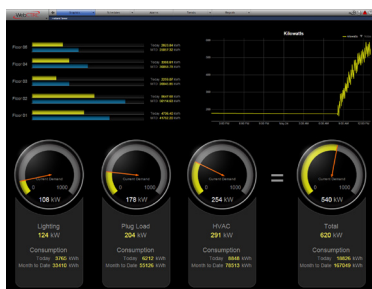
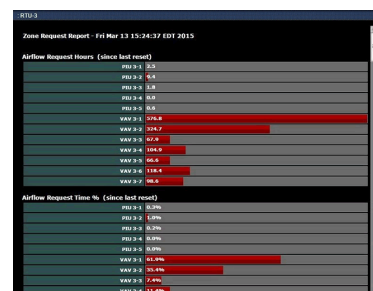


### Designed for Speed

The WebCTRL system is built to be fast. From the high speed trend engine that can read 860,000+ samples a second to the BACnet over ARCnet 156 Kbaud network, our industry leading data throughput provides the speed you need for critical analytics, reporting, visualization and dashboarding.

### Request Based Control

Built-in request based control saves energy by ensuring equipment runs only when occupants are in the building space. This standard WebCTRL system feature results in superior occupant comfort and proven energy savings.

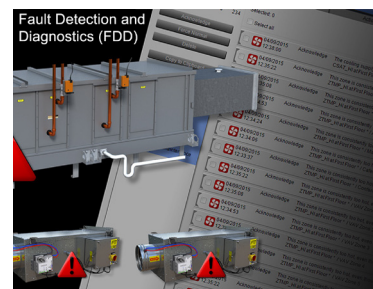


### Optimal Start and Demand Limiting

Optimal start routines and built in demand limiting work together, turning off equipment when it's not needed, or relaxing setpoints to reduce energy usage while maintaining comfort levels. These are standard features of every WebCTRL system.

### Fault Detection and Diagnostics (FDD)

The Automated Logic Fault Detection and Diagnostics (FDD) library in the WebCTRL system can pinpoint over 100 proven faults in typical HVAC equipment, including VAV systems, air handlers, fan coils, unit ventilators, water-source heat pumps, and air-source heat pumps.

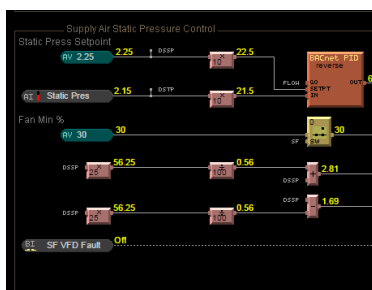


### Unlimited Users

The WebCTRL system is built to support unlimited simultaneous users. There is no need for multiple licenses, enabling all authorized building personnel to access and control HVAC, lighting, central plant and critical systems on premise or remotely.

### All Engineering Tools

When you buy an Automated Logic WebCTRL system, you receive the entire tool set used to engineer your facility. Every aspect of the product is open and available to the customer allowing for complete ownership of the system.

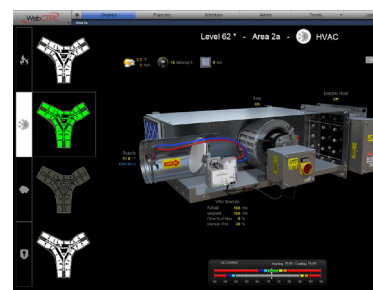


### Live Logic

Every WebCTRL system supports live, visual displays of control logic, which uses real time operational data and aids in optimizing and troubleshooting system operations. There is no need to understand cryptic "line by line" computer code.

### Intuitive User Interface

Every WebCTRL system delivers powerful, comprehensive building management with intuitive, point-and-click navigation. High-definition, factory-generated graphics are provided with every installation of the WebCTRL system, providing a consistent and excellent user experience.



In today's buildings, the power of an innovative, easy-to-use building automation system is a **big** deal.

Automated Logic Corporation specializes in the design and manufacture of energy management solutions. Our building automation and control systems utilize BACnet building controls at their core, making buildings smarter, more energy efficient, and more comfortable.

WebCTRL®, Automated Logic's web-based building automation system, is known for its intuitive user interface and powerful integration capabilities. It allows building operators to optimize and manage all of their building systems - including HVAC, lighting, fire, elevators, and security - all within a single platform. It's everything needed to keep occupants comfortable, manage energy conservation measures, identify key operational problems, and validate the results.

For over three decades, Automated Logic has been producing high-quality building automation systems. We are part of UTC Climate, Controls & Security, a unit of United Technologies Corp., a leading provider to the aerospace and building systems industries worldwide.

## Intelligent Buildings Made Powerfully Simple



The WebCTRL® building automation system gives you the ability to understand your building operations and analyze the results. The WebCTRL system integrates environmental, energy, security and safety systems into one powerful management tool that allows you to reduce energy consumption, increase occupant comfort, and achieve sustainable building operations. Our web-based platform allows building managers to control and access information about their HVAC, lighting, central plant and critical processes on premise or remotely at any time of day.

All trademarks used herein are the property of their respective owners.

1150 Roberts Boulevard, Kennesaw, Georgia 30144  
770-429-3000 Fax 770-429-3001 | [www.automatedlogic.com](http://www.automatedlogic.com)